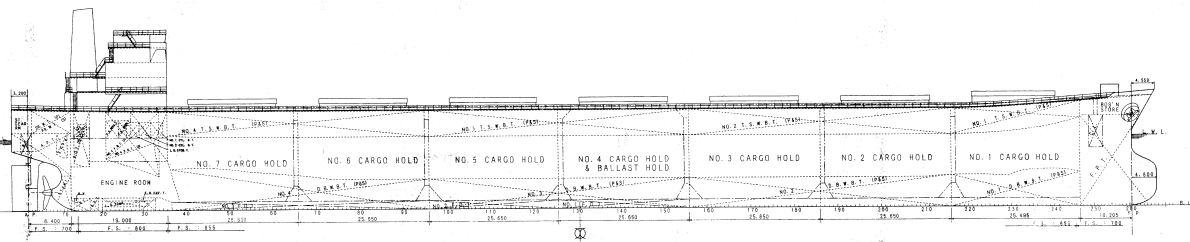
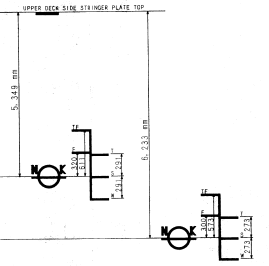


M. V. BALTIA

CAPACITY PLAN & DEADWEIGHT SCALE

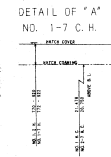
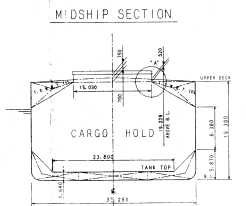
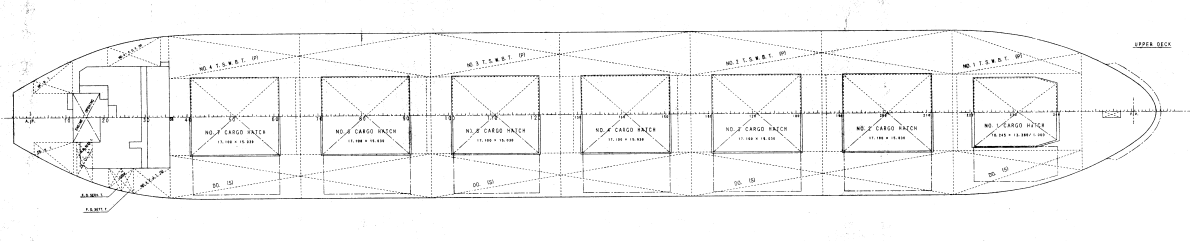
SCALE 1/300

DEAD WEIGHT SCALE		DRAUGHT	D.M. WATER	MAXIMUM D.M. WATER	D.M. FRESH WATER
F.P.C. A.T.C.	DISPLA. CEMENT				
1000	1000	14.000	76000	76000	76000
1010	1010	13.980	76000	76000	76000
1020	1020	13.960	76000	76000	76000
1030	1030	13.940	76000	76000	76000
1040	1040	13.920	76000	76000	76000
1050	1050	13.900	76000	76000	76000
1060	1060	13.880	76000	76000	76000
1070	1070	13.860	76000	76000	76000
1080	1080	13.840	76000	76000	76000
1090	1090	13.820	76000	76000	76000
1100	1100	13.800	76000	76000	76000
1110	1110	13.780	76000	76000	76000
1120	1120	13.760	76000	76000	76000
1130	1130	13.740	76000	76000	76000
1140	1140	13.720	76000	76000	76000
1150	1150	13.700	76000	76000	76000
1160	1160	13.680	76000	76000	76000
1170	1170	13.660	76000	76000	76000
1180	1180	13.640	76000	76000	76000
1190	1190	13.620	76000	76000	76000
1200	1200	13.600	76000	76000	76000
1210	1210	13.580	76000	76000	76000
1220	1220	13.560	76000	76000	76000
1230	1230	13.540	76000	76000	76000
1240	1240	13.520	76000	76000	76000
1250	1250	13.500	76000	76000	76000
1260	1260	13.480	76000	76000	76000
1270	1270	13.460	76000	76000	76000
1280	1280	13.440	76000	76000	76000
1290	1290	13.420	76000	76000	76000
1300	1300	13.400	76000	76000	76000
1310	1310	13.380	76000	76000	76000
1320	1320	13.360	76000	76000	76000
1330	1330	13.340	76000	76000	76000
1340	1340	13.320	76000	76000	76000
1350	1350	13.300	76000	76000	76000
1360	1360	13.280	76000	76000	76000
1370	1370	13.260	76000	76000	76000
1380	1380	13.240	76000	76000	76000
1390	1390	13.220	76000	76000	76000
1400	1400	13.200	76000	76000	76000
1410	1410	13.180	76000	76000	76000
1420	1420	13.160	76000	76000	76000
1430	1430	13.140	76000	76000	76000
1440	1440	13.120	76000	76000	76000
1450	1450	13.100	76000	76000	76000
1460	1460	13.080	76000	76000	76000
1470	1470	13.060	76000	76000	76000
1480	1480	13.040	76000	76000	76000
1490	1490	13.020	76000	76000	76000
1500	1500	13.000	76000	76000	76000



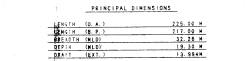
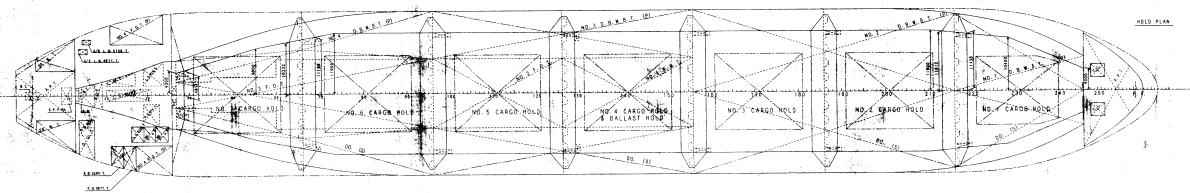
FULL LOAD CONDITION

ITEM	FREE-BOARD (M)	DRAFT EXTREME (M)	SPECIFIC GRAVITY (M)	DISPLA-CEMENT (MT)	DEAD-WEIGHT (MT)
TROPICAL FRESH WATER	TF 4.738	14.605	1.000	87.468	77.688
FRESH WATER	F 5.029	14.314		85.571	75.771
TROPICAL T	5.058	14.285		87.517	77.717
SUMMER S	5.349	13.994	1.025	85.576	75.776
WINTER W	5.640	13.703		83.637	73.837



MULTIPLE LOAD CONDITION

ITEM	FREE-BOARD (M)	DRAFT EXTREME (M)	SPECIFIC GRAVITY (M)	DISPLA-CEMENT (MT)	DEAD-WEIGHT (MT)
TROPICAL FRESH WATER	TF 5.660	13.683	1.000	81.487	71.657
FRESH WATER	F 5.933	13.410		79.696	69.896
TROPICAL T	5.960	13.383		81.509	71.709
SUMMER S	6.233	13.110	1.025	79.697	69.897
WINTER W	6.508	12.837		77.888	68.088



CARGO HOLD AND MOTOR CAPACITY

COMPARTMENT	FRAME NUMBER	CAPACITY (MT)	NET WEIGHT (MT)	NET VOLUME (M ³)	NET WEIGHT (MT)	NET VOLUME (M ³)
No. 1 CARGO	180-181	12,000	11,000	12,000	11,000	12,000
No. 2 CARGO	182-183	12,000	11,000	12,000	11,000	12,000
No. 3 CARGO	184-185	12,000	11,000	12,000	11,000	12,000
No. 4 CARGO	186-187	12,000	11,000	12,000	11,000	12,000
No. 5 CARGO	188-189	12,000	11,000	12,000	11,000	12,000
No. 6 CARGO	190-191	12,000	11,000	12,000	11,000	12,000
No. 7 CARGO	192-193	12,000	11,000	12,000	11,000	12,000
TOTAL		84,000	77,000	84,000	77,000	84,000

BALLAST WATER TANKS CAPACITY

COMPARTMENT	FRAME NUMBER	CAPACITY (MT)	NET WEIGHT (MT)	NET VOLUME (M ³)	NET WEIGHT (MT)	NET VOLUME (M ³)
No. 1 BALLAST	180-181	1,000	900	1,000	900	1,000
No. 2 BALLAST	182-183	1,000	900	1,000	900	1,000
No. 3 BALLAST	184-185	1,000	900	1,000	900	1,000
No. 4 BALLAST	186-187	1,000	900	1,000	900	1,000
No. 5 BALLAST	188-189	1,000	900	1,000	900	1,000
No. 6 BALLAST	190-191	1,000	900	1,000	900	1,000
No. 7 BALLAST	192-193	1,000	900	1,000	900	1,000
TOTAL		7,000	6,300	7,000	6,300	7,000

FUEL OIL TANKS CAPACITY

COMPARTMENT	FRAME NUMBER	CAPACITY (MT)	NET WEIGHT (MT)	NET VOLUME (M ³)	NET WEIGHT (MT)	NET VOLUME (M ³)
No. 1 FUEL OIL	180-181	1,000	900	1,000	900	1,000
No. 2 FUEL OIL	182-183	1,000	900	1,000	900	1,000
No. 3 FUEL OIL	184-185	1,000	900	1,000	900	1,000
No. 4 FUEL OIL	186-187	1,000	900	1,000	900	1,000
No. 5 FUEL OIL	188-189	1,000	900	1,000	900	1,000
No. 6 FUEL OIL	190-191	1,000	900	1,000	900	1,000
No. 7 FUEL OIL	192-193	1,000	900	1,000	900	1,000
TOTAL		7,000	6,300	7,000	6,300	7,000

FRESH WATER TANKS CAPACITY

COMPARTMENT	FRAME NUMBER	CAPACITY (MT)	NET WEIGHT (MT)	NET VOLUME (M ³)	NET WEIGHT (MT)	NET VOLUME (M ³)
No. 1 FRESH WATER	180-181	1,000	900	1,000	900	1,000
No. 2 FRESH WATER	182-183	1,000	900	1,000	900	1,000
No. 3 FRESH WATER	184-185	1,000	900	1,000	900	1,000
No. 4 FRESH WATER	186-187	1,000	900	1,000	900	1,000
No. 5 FRESH WATER	188-189	1,000	900	1,000	900	1,000
No. 6 FRESH WATER	190-191	1,000	900	1,000	900	1,000
No. 7 FRESH WATER	192-193	1,000	900	1,000	900	1,000
TOTAL		7,000	6,300	7,000	6,300	7,000

SEAWATER TANKS CAPACITY

COMPARTMENT	FRAME NUMBER	CAPACITY (MT)	NET WEIGHT (MT)	NET VOLUME (M ³)	NET WEIGHT (MT)	NET VOLUME (M ³)
No. 1 SEAWATER	180-181	1,000	900	1,000	900	1,000
No. 2 SEAWATER	182-183	1,000	900	1,000	900	1,000
No. 3 SEAWATER	184-185	1,000	900	1,000	900	1,000
No. 4 SEAWATER	186-187	1,000	900	1,000	900	1,000
No. 5 SEAWATER	188-189	1,000	900	1,000	900	1,000
No. 6 SEAWATER	190-191	1,000	900	1,000	900	1,000
No. 7 SEAWATER	192-193	1,000	900	1,000	900	1,000
TOTAL		7,000	6,300	7,000	6,300	7,000

FACTOR FOR LUBRICANTS

ITEM	QUANTITY (MT)	DENSITY (MT/M ³)	VOLUME (M ³)	WEIGHT (MT)
LUBRICANTS	100	0.85	117.6	100
RESERVE	100	0.85	117.6	100
TOTAL	200	0.85	235.2	200

DESIGN DIVISION
 M. V. BALTIA
 CAPACITY PLAN (WITH DEADWEIGHT SCALE)
 DATE 2 NOV. 56
 DRAWING NO. 1222 02310
 SCALE 1/300



FINISHED PLAN